

# Replace a Bathroom Sink and Countertop

## Checklist

- Prefabricated countertop and drop-in lavatory sink; or integral sink/countertop
- Acrylic caulk/sealant (to match sink/counter color, or paintable)
- Scribe (also called a compass)
- Tape Measure
- Portable jigsaw with fine-tooth blade
- Electric drill with 3/8-inch bit
- Hole saw or spade bits (if required for faucet holes)
- Faucet and drain assembly (if new set is required)
- Pipe wrench and/or channel locking pliers
- Plumber's putty (small container)
- Water-line supply tubes (if new ones are required)
- Drain tailpiece, trap, and line (if new ones are required)
- Duct tape
- Hacksaw
- Standard and Phillips screwdrivers
- Putty knife

## One: Fit the countertop.

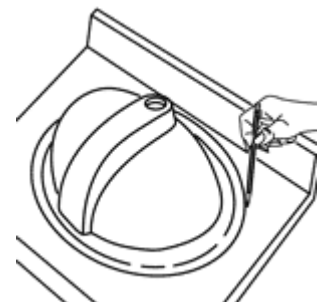
- If the counter touches a wall on one side, place the counter on the vanity to check for proper fit at the back and side walls.
- You may decide to simply seal small gaps with caulk, but if there's a large gap at the side wall, you should scribe the counter to the wall. (For details on this, refer to [Install a Kitchen Countertop](#))

## Two: Layout the cutout.

- Either use the sink manufacturer's paper template as directed to determine the required sink cutout

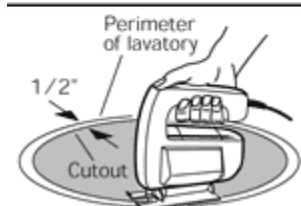
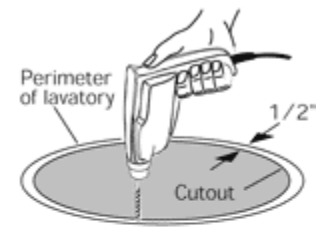
**OR**

- Turn the sink upside down on the countertop to trace the sink perimeter on the top.
- Draw a second line parallel 1/2-inch inside the perimeter.
- (Skip to step four if you are installing an integral sink/countertop.)
- If the faucets are mounted in the counter carefully locate the holes as directed.



## Three: Cut the sink opening.

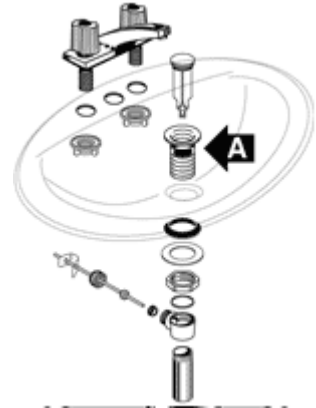
- Bore a 3/8-inch clearance hole through the countertop on the inside edge of the cutout line.
- Use a portable jigsaw with a fine-tooth blade to cut the sink opening.
  - To drill counter-mounted faucet holes, use an electric drill and an appropriately size hole saw or spade bit.



- If there isn't anyone to help support the cutout as you complete the cut, place a board across the counter so it crosses the cutout and rests on the counter to the left and right of the cutout.
- Screw it to the center of the cutout with a single screw.

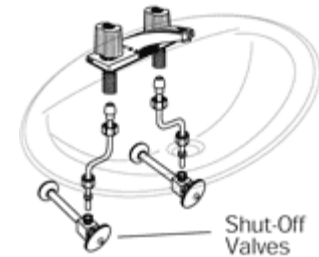
**Four: Install the faucet and drain assembly.**

- It's easier to preinstall the faucet and drain assembly on the sink before you install it in the countertop
  - Or, if you're installing an integral sink counter or counter-mounted faucets, before you set the counter/sink on the vanity cabinet.
- Follow the manufacturer's instructions for assembly.
- Apply a bead of plumber's putty (not caulk) on the underside of the flange on the drain (A) to seal it with the sink.



**Five: Trial-install the sink and supply lines.**

- Connect the supply tube to each faucet tailpiece and tighten with an adjustable wrench.
- Lower the sink in the opening to test fit and alignment.
- Hold the sink in place with a couple strips of duct tape.
- Check the fit of the supply tubes.
  - Flexible reinforced tubing is the easiest to use since it bends or coils as needed to fit between the faucet tailpiece and the shutoff valve.
  - Flexible vinyl tubing (as shown) bends a little and can be cut to length with a hacksaw.

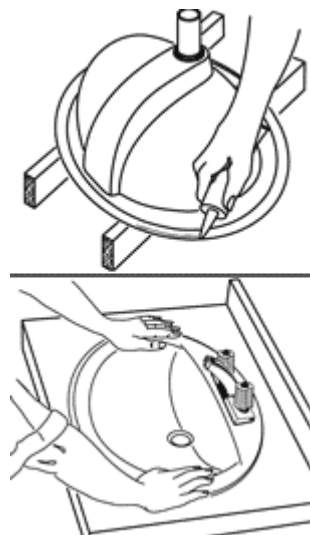


**TIP**

Remove the vanity doors for easier access if you have not already done so.

**Six: Install the sink.**

- Remove the sink.
- Apply a bead of color-matched caulk to the underside of the rim near the outer edge.
- Holding the sink by the faucet, carefully lower it into place.
- Press firmly.
- Remove excess caulk with a putty knife, or a similar tool.
- Allow caulk to set up before proceeding.
  - If you're installing an integral sink/countertop, apply a generous bead of adhesive caulk to the top edge of the vanity cabinet before you position the sink/top on the vanity.

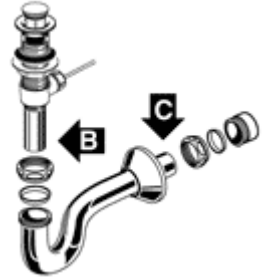


**Seven: Connect water supply lines.**

- When the caulk is set, secure the supply tubes to the shut-off valves with an adjustable wrench.
  - Hand-tight plus a quarter turn with wrench. Don't over-tighten.

**Eight: Connect drain lines.**

- Reuse the existing plastic drain trap, or replace your old metal trap with a plastic one.
- You may have to cut the drain tailpiece (B) or the drain line (C).
- Hand-tighten the fittings and test for leaks.
- It may be necessary to tighten no more than a quarter turn more with a channel-locking pliers or pipe wrench.



**Nine: Restore water supply.**

- Turn on the water to test water and drain lines for leaks.
- Tighten connections as needed.
- Remove any excess caulk or plumber's putty.
- Reinstall the cabinet doors to complete the project.

---

For this information and more refer to [www.truevalue.com](http://www.truevalue.com)